



UPDATE  
6.0

# Tiger

**Bulk Production Downloader v3**

Production: Wilke Technology GmbH  
Heider-Hof-Weg 23D  
D-52080 Aachen, Germany  
[www.wilke.de](http://www.wilke.de)  
[info@wilke.de](mailto:info@wilke.de)

Cover: Wilke Technology GmbH

Print: Print Production, [www.printproduction.de](http://www.printproduction.de)

Edition: v6.0

Copyright: Wilke Technology GmbH, Germany

This manual, as well as the hardware and software presented in this manual, are copyrighted and may not be copied in any way, translated or modified without the explicit written permission of Wilke Technology GmbH.

BASIC-Tiger®, TINY-Tiger™, Econo-Tiger™, Tiger-II™, Tiger-Basic™, CoolBase™ are registered trademarks of Wilke Technology GmbH. TouchMemory™ is a registered trademark of Dallas Semiconductors, Windows™ is a registered trademark of Microsoft Corp.

Those designations of products and methods given in this publication, which are trademarks, were not especially indicated. Such names are trademarks of the respective trademark owner. It cannot be concluded from the absence of the TM mark that the designation is not a registered trademark.

Editors, translators and authors of this publication created texts, figures and programs with due diligence. However, errors are still possible. Wilke Technology does not accept guarantees, legal responsibility or liability for consequences which were caused by incorrect statements. Any feedback concerning errors is welcome.

Information given in this manual is not a warranty of specific product features. Changes, which conduce to technical progress, remain reserved.

# Content

Overview	4
Quick Start	5
Menu: File	9
Menu: Window	11
Menu: Settings	11
Menu: Help	11

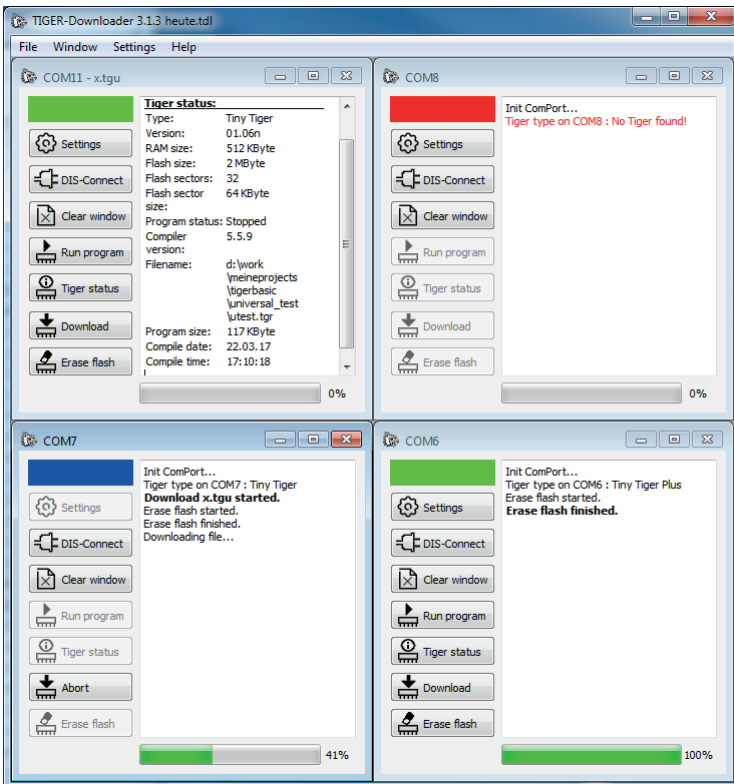
# Downloader

## Overview

The Downloader loads compiled Tiger programs to Tiger modules. The default file extension is depending on the used module generation: TGU, T2U, T3U or TPU.

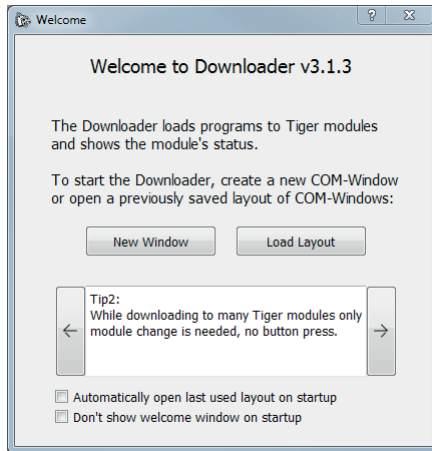
You can download the latest version from the following link:

<https://wilke.de/en/service-center/download-center/tiger-tools.html>



## Quick Start

Please connect your hardware with a Tiger Multitasking module to a free COM-Port at your computer. Power on your hardware and set it to "PC-Mode". Then press the "Reset" button on your hardware.



After successful installation of the downloader software, a welcome screen will appear at the first start of the program.

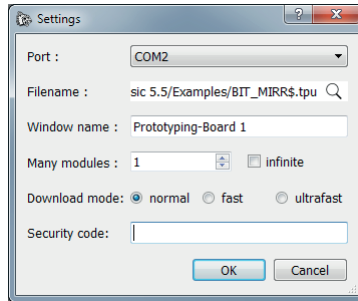
At the bottom of the welcome window are two check boxes:

- ▶ Automatically open last used layout on startup  
When this option is set, the downloader starts automatically with the last layout you worked on, [see „Load layout“ on page 10](#). No need for manual opening.
- ▶ Don't show welcome window on startup  
The welcome window will not be shown on future program startups, if this option is set. If you like to reenale the welcome screen, please go to the menu: Settings, then Options and uncheck "Don't show welcome window on startup".

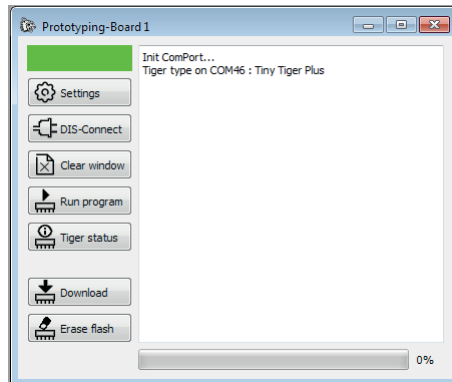
You can continue by clicking the button "New Window" to get started.

## Downloader

After clicking the button, the following settings dialogue appears. For more information see chapter „[New Window](#)“ on page 9.

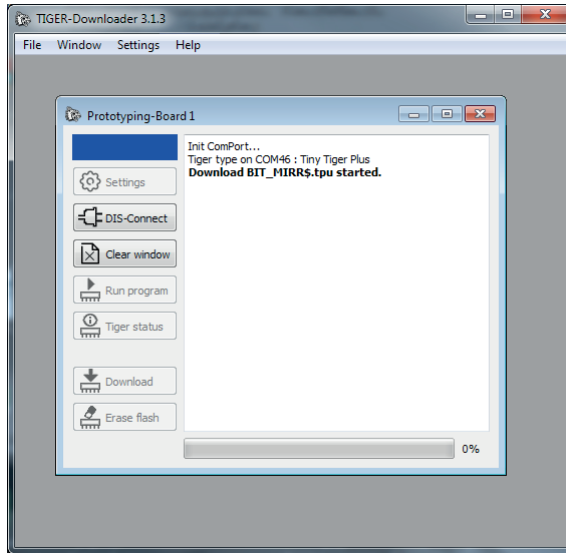


When clicking “OK”, the following COM-Port window will appear:

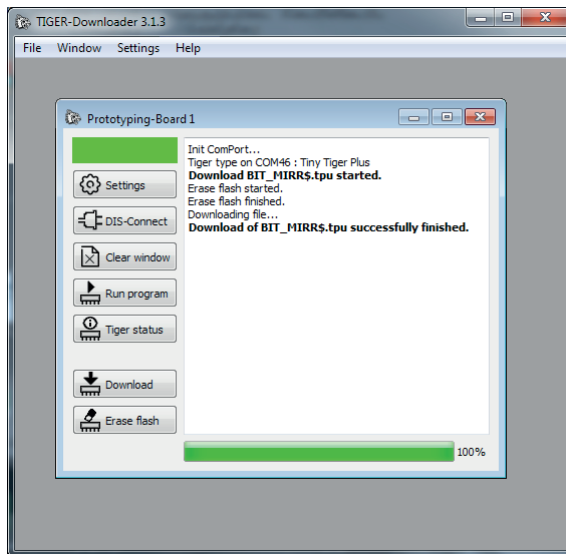


The module type will instantly be recognized automatically. The green rectangle in the top left corner will indicate, that the module is connected and ready to perform any actions. This rectangle will turn blue when a procedure is in progress. It will change to red if the module or COM-Port is not available.

Use the button “**Download**” to program the module.

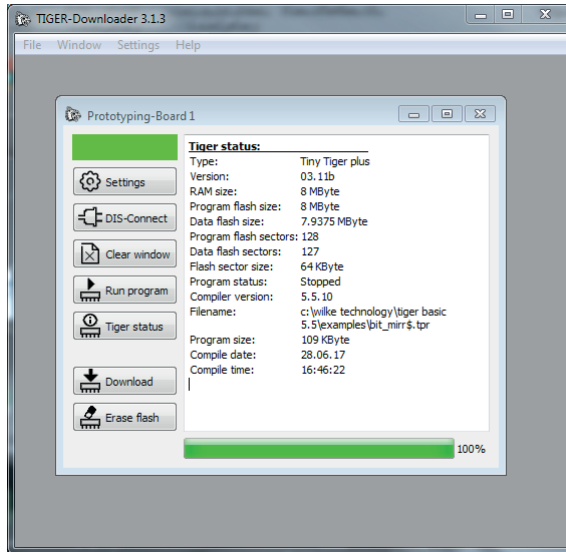


The progress bar shows the current progress of the download procedure.



## Downloader

Information during the download will be shown in the log window area. Further, when the download is finished, the status of the download will be shown. By pressing the “**Tiger status**” button, detailed information about the module will be shown without performing any changes on the module itself. There you can see the memory size, compile date of the loaded program and many other important pieces of module information:



Use the “**Disconnect**” button to release your COM-Port. After that it can be used in other applications. You can always use this button to reconnect, if the COM-Port is not in use.

The “**Settings**” button will reopen the settings dialogue. Here you can change the download options like COM-Port, file or download speed.

“**Clear window**” will erase the entire log area.

“**Erase flash**” will erase the flash memory of your connected module. You can choose between full erase or only erase used sectors of the flash memory.

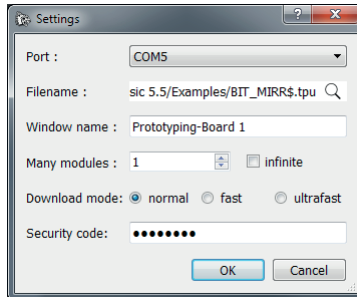
“**Run program**” will start the program loaded to the module.



## Menu: File

### New Window

To open a connection to your Tiger module, use this option and the following window will appear:



Choose your desired **COM-Port in the drop-down** menu. All COM-Ports on your computer will be listed, the COM-Ports that are already used by the Downloader are marked by a “\*”. If a COM-Port is missing, please make sure that your computer has a hardware built in COM-Port or use a high-quality USB adapter.

Please select your desired **Downloader compatible file** by clicking the magnifier icon. Optionally, you can **give a name to your COM-Port window** in the next field. This is useful when handling several windows to easily keep track of your devices.

**Many modules** is a helpful option for series production. E.g. you can type “100” and 100 modules can be successfully programmed in a row without any user interaction on the computer. Also, you can use the **“infinite” check box** to have no limit on the number of modules. The log area shows the actual module number.

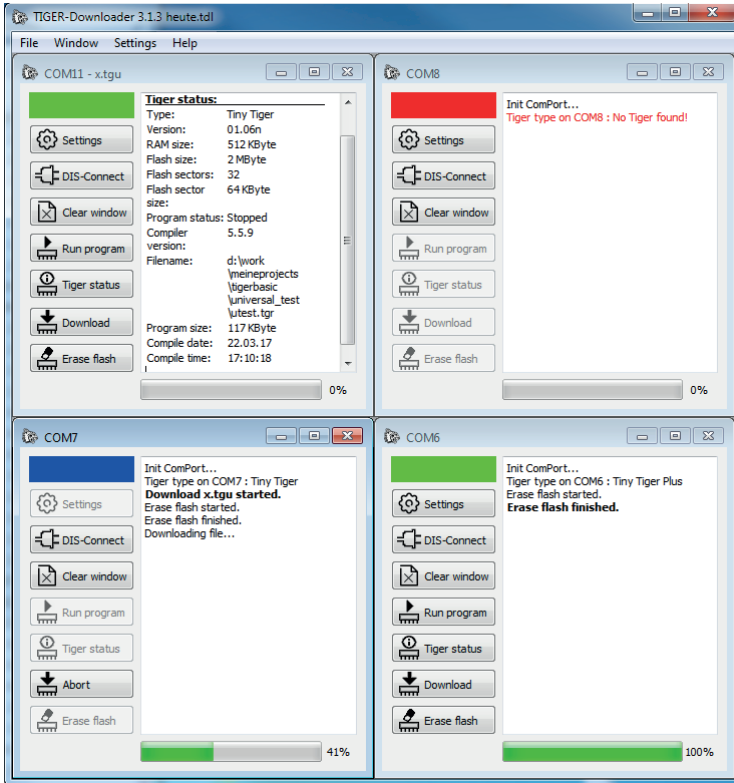
**“Download mode”** makes it possible to choose the desired download speed. The useable download speeds depend on the generation of the module.

If the Tiger is protected by USER\_SECURITY, you must set the same password in the **Security code** field. This is needed for erasing the flash or for downloading a new program.

The “OK” button opens a new COM-Port window with all settings applied, “Cancel” closes the dialog.

## Downloader

To add another COM-Port window, click NewWindow in the File menu. Several COM-Port windows can be used simultaneously, each one performing its task independently from each other:



### Layouts:

In a layout file, all COM-Port windows with their positions, sizes and settings are stored. Multiple layouts can be saved and loaded afterwards.

### Load layout

“Load layout” opens a previously saved layout file. Each COM-Port window from the layout file will be shown in size and position as stored. All settings will be applied.

### Save layout

This menu entry will save your current session, all open windows with the whole settings set like COM-Port, filename, window position and size, window name, encrypted security code...

This option is very helpful if you need to work on the same hardware connected to this COM-Port frequently or when performing the same download in the future.

### Recent layouts

This menu provides a list of the last used layouts. From this list, you can quickly access the most recently used layouts.

## Menu: Window

With the options "**cascade**" and "**tile**" you can organize many windows easily.

## Menu: Settings

The "**Language**" option makes it possible to change the program language.

The "**Options**" menu entry will lead to a new dialogue with the following settings:

- ▶ Use colored message background  
When the download is successful, the log area background will turn green - otherwise it will turn red. This is helpful for series productions with many windows so as not to miss a failed download process.
- ▶ Automatically open last used layout on startup  
When this option is set, the downloader will automatically open the last layout you worked on. No need for manual opening.
- ▶ Don't show welcome window on startup  
The welcome window will not be shown on future program startups.

## Menu: Help

### TIGER-Downloader

By pressing this menu entry, information about the program itself, license agreement, changelog, contact information etc. is shown.

### User guide

This menu entry opens the PDF user guide.



**Notes:**

---

---

---

**Thank you for using Tiger products**

**Further information about the product: [www.wilke.de](http://www.wilke.de)**

**Do you have any questions?**

**Our support team will be more than glad to help**



**+49.2405.408.55 - 0**



**+49.2405.408.55 - 444**



**[support@wilke.de](mailto:support@wilke.de)**

Production: Wilke Technology GmbH  
Heider-Hof-Weg 23D  
D-52080 Aachen, Germany  
[www.wilke.de](http://www.wilke.de)  
[info@wilke.de](mailto:info@wilke.de)

Edition: 6.0

Copyright: Wilke Technology GmbH, Germany

**UPDATE**

**6.0**



## **Wilke Technology GmbH**

D 52080 Aachen • Germany

+49.2405.408 55-0 • [support@wilke.de](mailto:support@wilke.de) • [www.wilke.de](http://www.wilke.de)

Made in Germany