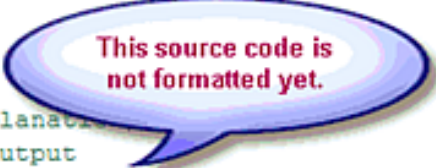


AStyle C/C++ Source Code Formatter Plugin

This plugin allows for formatting and pretty-printing of C/C++ source code in an easy and convenient way.

It is based on the [Artistic Style](#) code formatter utility.

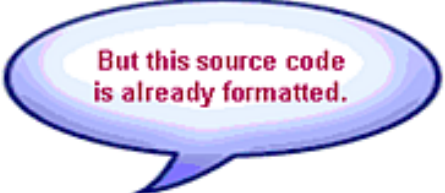
```
void main() { int ser_id;
#ifdef USE_TINY_TIGER_PROTO_BOARD
// switch Tiny Tiger Prototyping Board Ser0 to RS232
// (see documentation for detailed explanation)
dir_port(8, 0x80, 0); // set internal port 8, pin 7 to output
out_port(8, 0); // set internal I/O port 8, pin 7 to 0
#endif
// get device id
if ( (ser_id=device_get_id_by_name("SER1B_K1"))<0 ) // serial
return;
//install serial driver
device_install( ser_id, BD_38_400, DP_8N, YES ); printf("Hello, World!\r\n"); } // End
```



AStyle Plugin



```
void main()
{
int ser_id;
#ifdef USE_TINY_TIGER_PROTO_BOARD
// switch Tiny Tiger Prototyping Board Ser0 to RS232
// (see documentation for detailed explanation)
dir_port(8, 0x80, 0); // set internal port 8, pin 7 to output
out_port(8, 0); // set internal I/O port 8, pin 7 to 0
#endif
// get device id
if ( (ser_id=device_get_id_by_name("SER1B_K1"))<0 ) // serial
return;
//install serial driver
device_install( ser_id, BD_38_400, DP_8N, YES );
printf("Hello, World!\r\n");
} // End
```



What is the Artistic Style code formatter utility ?

Artistic Style is a re-indenter and re-formatter of C and C++ source code.

The **AStyle** homepage is at sourceforge.net/projects/astyle/.

Why Source Code Indentation ?

When indenting source code, we as programmers have a tendency to use both spaces and tab characters to create the wanted indentation. Moreover, some editors by default insert spaces instead of tabs when pressing the tab key, and other editors (Emacs for example) have the ability to "pretty up" lines by automatically setting up the white space before the code on the line, possibly inserting spaces in a code that up to now used only tabs for indentation.

Since the NUMBER of space characters showed on screen for each tab character in the source code changes between editors (until the user sets up the number to his liking...), one of the standard problems facing programmers when moving from one source code editor to another is that code containing both spaces and tabs that was up to now perfectly indented, suddenly becomes a mess to look at when changing to another editor. Even if you as a programmer take care to ONLY use spaces or tabs, looking at other peoples source code can still be problematic.

How to Install the Artistic Style Eclipse Plugin for Tiger C

Our plugin *AStylePlugin_x.x.x* is intended to enable using the Artistic Style formatter under Eclipse.

This is done by using **Artistic Style** (also known as **astyle**) by Tal Davidson (davidson@bigfoot.com).

See <http://sourceforge.net/projects/astyle> for more information.

The version currently used is **Artistic Style 1.15.3**.

Artistic Style is already contained in this plugin. There is no need to download it separately!

To install this plugin:

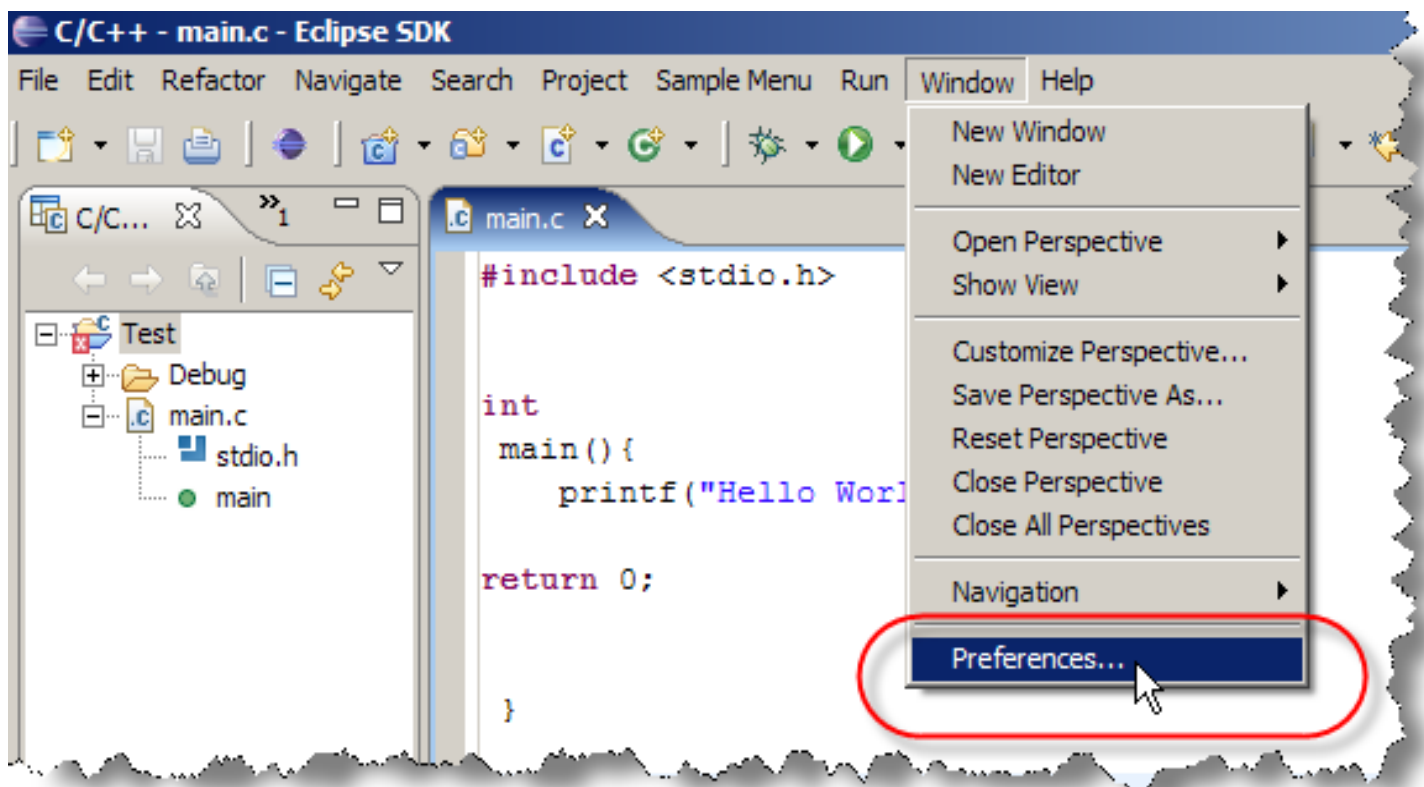
- 1) Exit Eclipse, if it is running
- 2) Unzip the contents of the file *AStylePlugin_x.x.x.zip* to the directory **TIGERC_HOME/eclipse**
- 3) Restart Eclipse. To make sure it picks up the new plugin(s), you need to start Eclipse with an argument of '-clean'; this tells Eclipse to flush its plugin cache and load everything fresh this time.

How to Use the Artistic Style with Eclipse for Tiger C

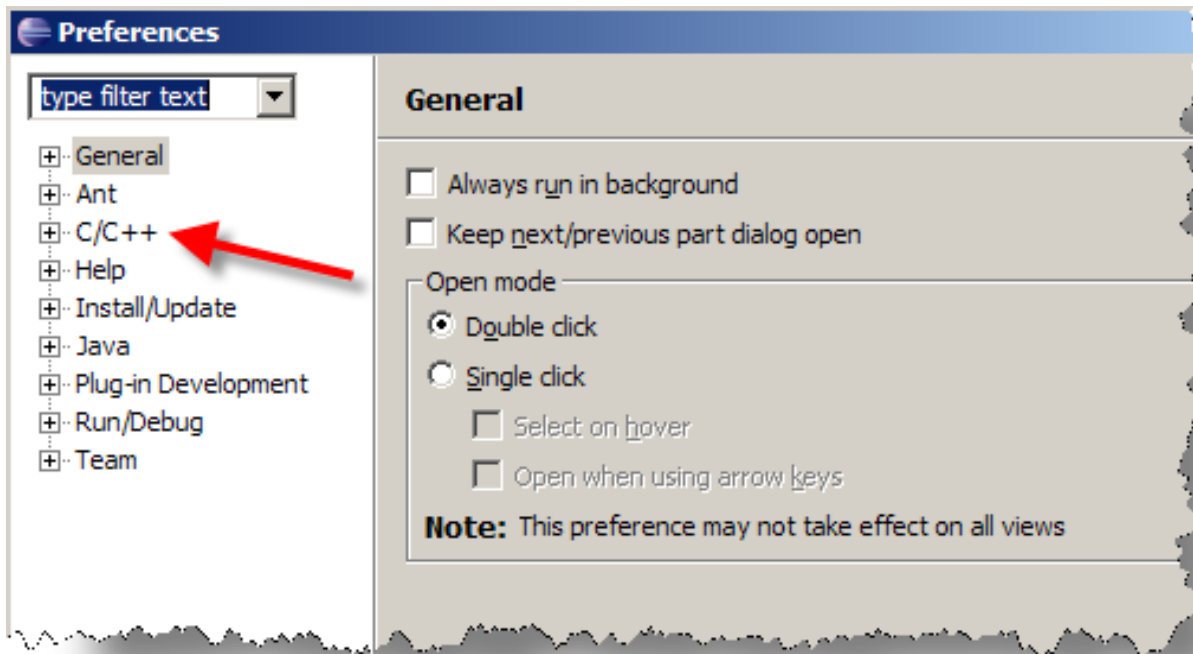
Configure Eclipse to Enable the Artistic Style

After restarting you should re-configure Eclipse.

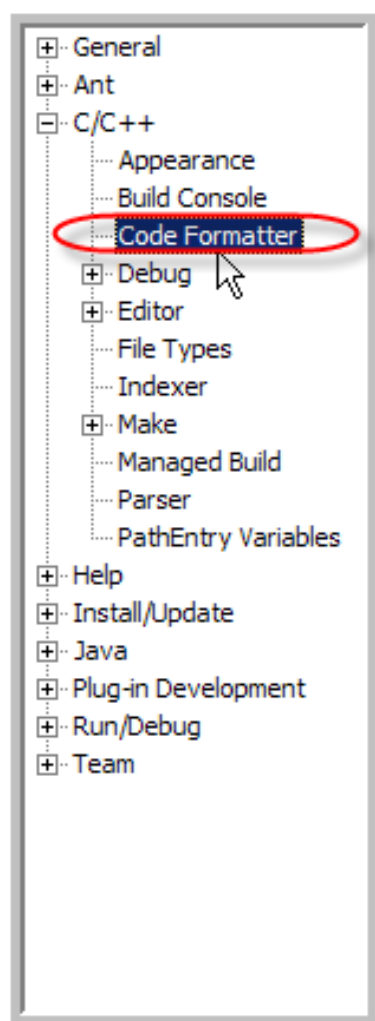
- 1) Open the window "Preferences" (Window->Preferences).



2) In window "Preferences" double-click on the "C/C++".

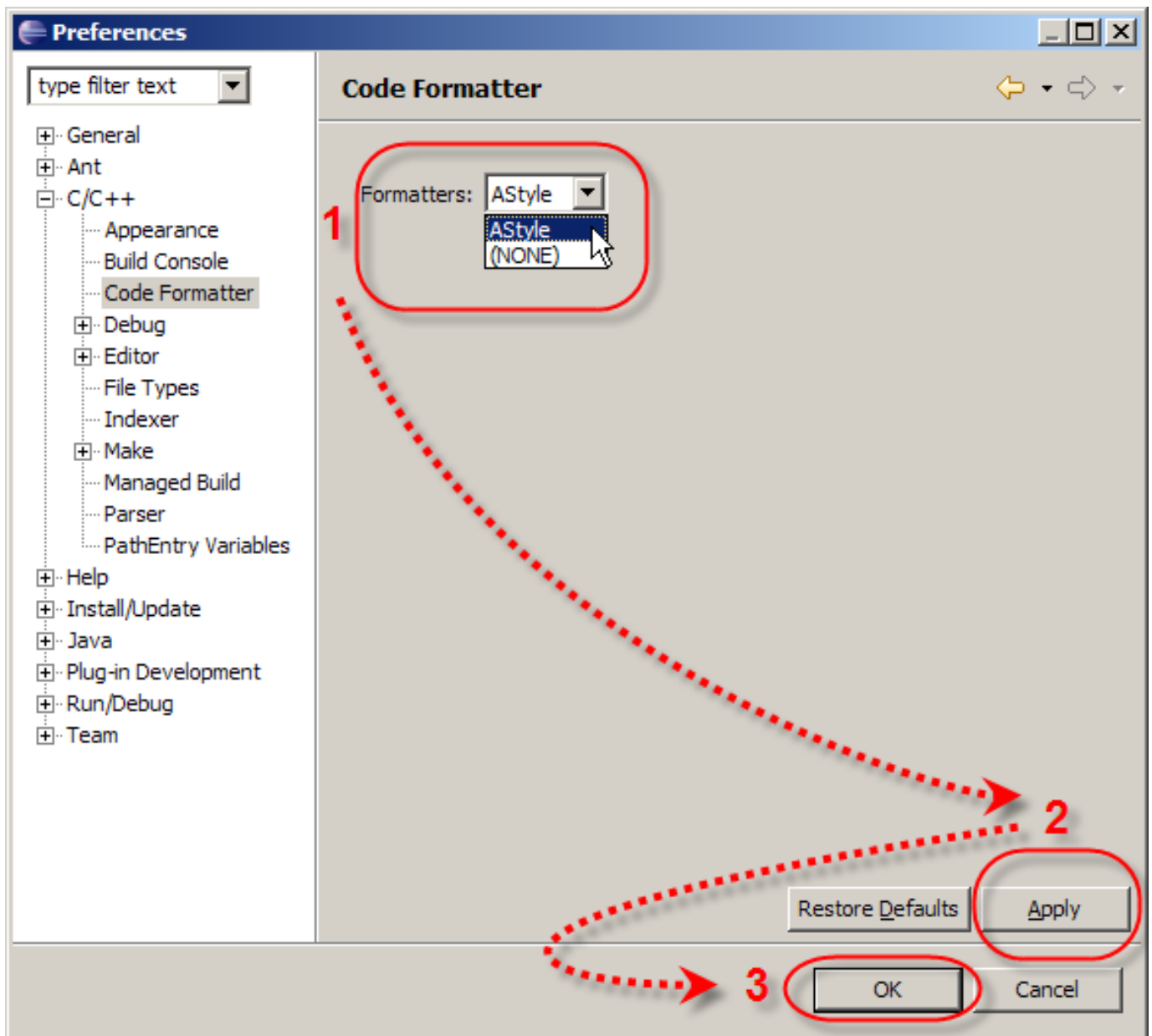


3) In the popup menu select "Code Formatter".



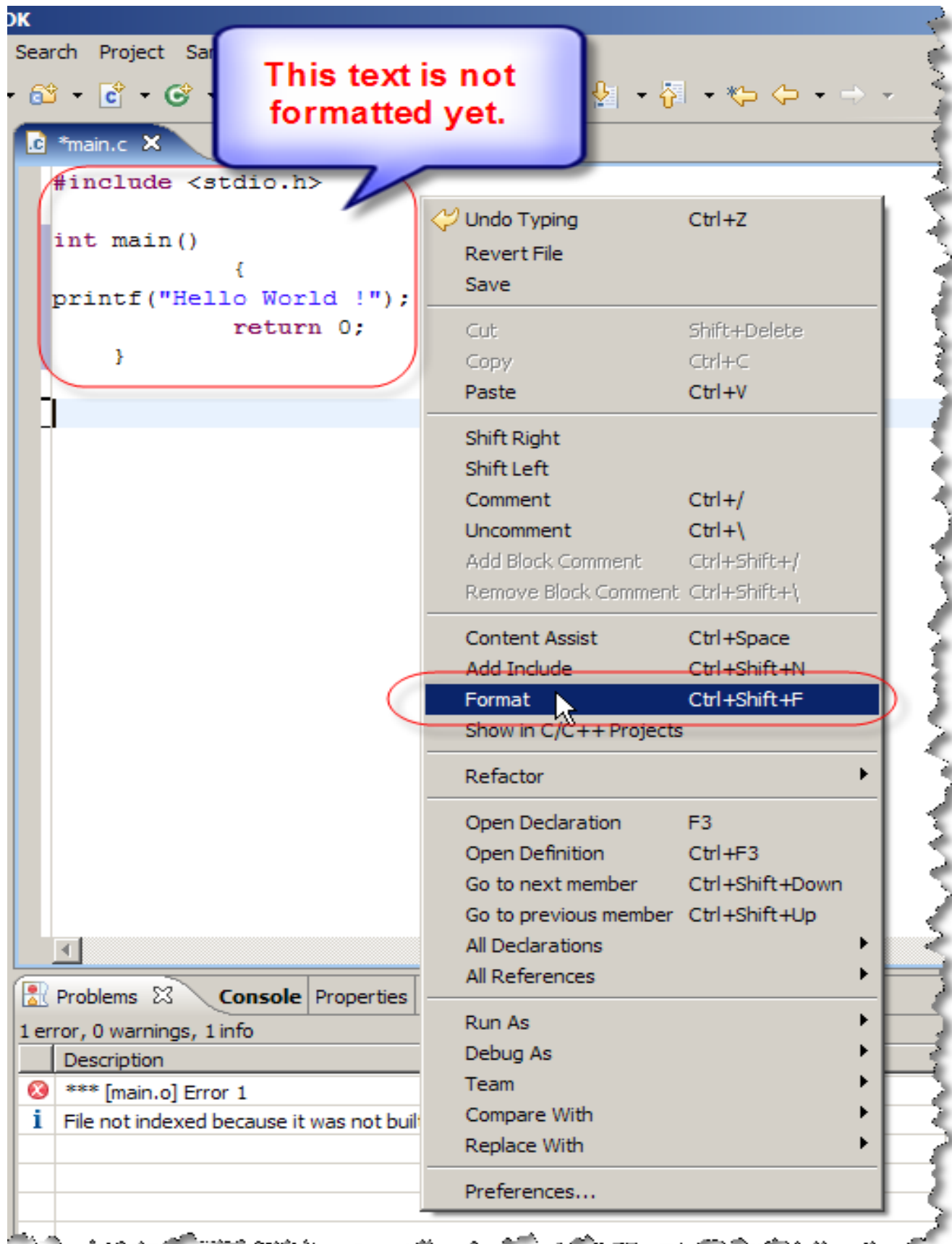
4) In the window "Code Formatter", in the combo box "Formatters" select "AStyle".

5) Click on the button "Apply" and then on the button "Ok".



Apply the Artistic Style for Source Code Formatting

To format source code in the text editor click on the right mouse button and in the context menu select the item "Format" or use the buttons combination "Ctrl+Shift+F".



Copyright and License

AStyle Eclipse Plugin - Copyright (C) 2006 Wilke Technology GmbH.

This program is free software; you can redistribute it and/or modify it under the terms of the [GNU General Public License](#) as published by the Free Software Foundation; either version 2 of the License, or (at your option) any later version.

This program is distributed in the hope that it will be useful, but WITHOUT ANY WARRANTY; without even the implied warranty of MERCHANTABILITY or FITNESS FOR A PARTICULAR PURPOSE. See the GNU General Public License for more details.

You should have received a copy of the GNU General Public License along with this program; if not, write to the Free Software Foundation, Inc., 59 Temple Place, Suite 330, Boston, MA 02111-1307 USA

Artistic Style is licensed under the [GNU General Public License \(GPL\)](#) and [GNU Library or Lesser General Public License \(LGPL\)](#).